

Guide to the selection and specification of Chimney Pots

The data page for each chimney pot in this website provides dimensional information for the base and the top. For further information a drawing can be opened and downloaded for each item.

Chimney Pots

Base

A = Base internal dimension

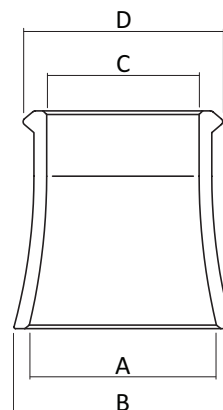
B = Base external dimension

- Round bases and round tops - the dimension is the diameter in mm
- Square bases and round tops – the dimension is square in mm for the base and diameter in mm for the top
- Square bases and square tops – the dimension is square in mm for both base and top

Top

C = Top internal dimension

D = Top external dimension



H-Pots

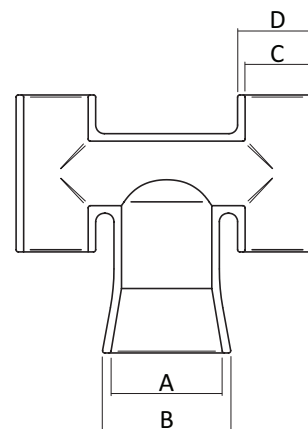
Base Top

A = Base internal dimension

B = Base external dimension

C = Internal diameter of each vertical outlet

D = External diameter of each vertical outlet



Hooded Pots, DFE Pots and Inserts, Hooded inserts

Top

D = Length of top /hood

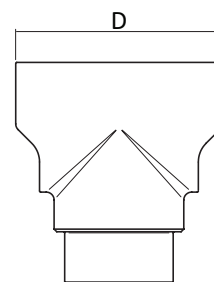
The weight and height of each pot is shown on the individual data page for each model of pot.

Colour

To specify the product colour a suffix should be added to the product code which is shown on each data page in this website.

R = Red, B = Buff, G = Glazed

Example: a glazed Leeds Bishop Pot - KYQ31G



Search

The Search function will accept a product code or product name.

Please note: it is not possible to use the website search function for a product code when the colour suffix is added to the product code.